

222



IDP HHs

149% increase in displacement from the previous week (89 HHs)

2



Returnee HHs

IOM Yemen DTM's Rapid Displacement Tracking (RDT) tool collects data on estimated numbers of households forced to flee on a daily basis from their locations of habitual residence or displacement, allowing for regular reporting of new displacements¹ in terms of estimated numbers, causes of displacement, geography and needs. It also tracks returnees who returned to their location of habitual residence.

Between 19 and 25 June 2022, IOM Yemen DTM tracked 222 households (1,332 individuals)² who experienced displacement at least once.

Safety and security concerns as a result of the conflict were the main reason for displacement, accounting for 75 per cent (167 HHs) of the total, followed by economic reasons related to conflict, accounting for 25 per cent (55 HHs).

Between 1 January to 25 June 2022, IOM Yemen DTM tracked 6,893 households (HH)³ (41,358 Individuals) who experienced displacement at least once.

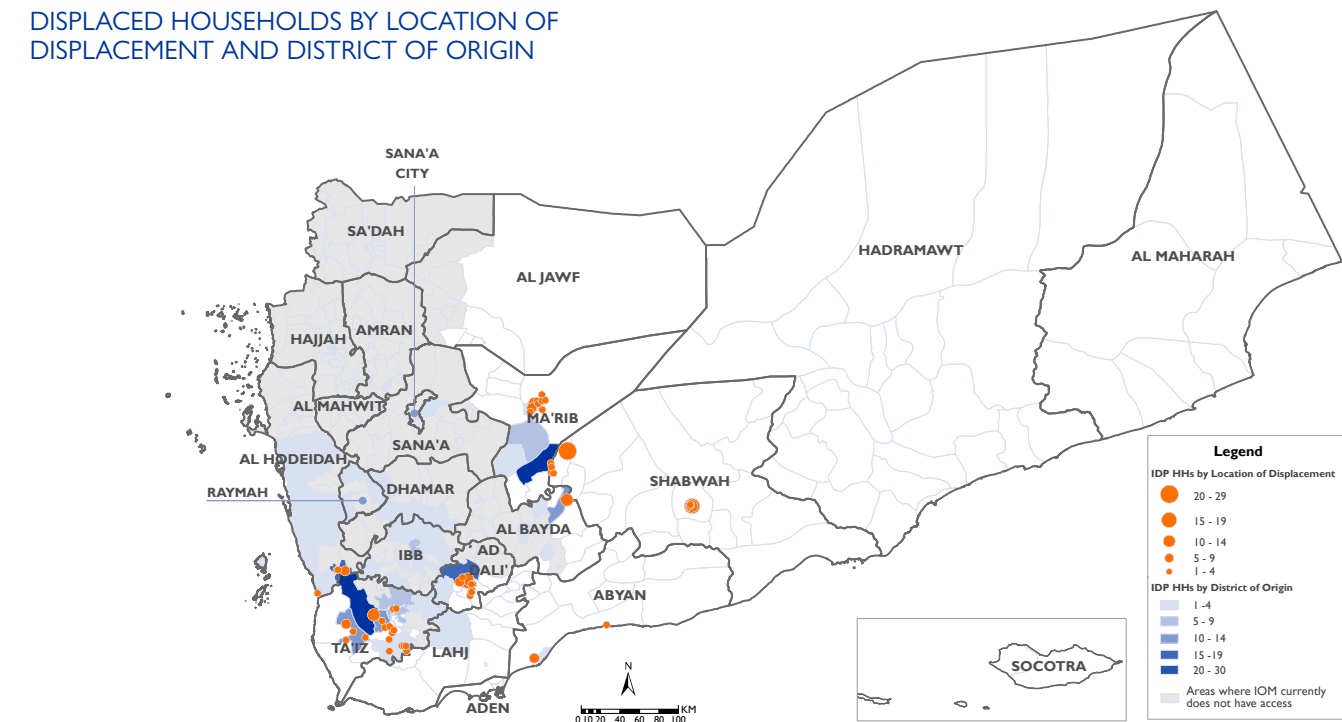
Since the beginning of the year, the number of tracked new instances of displacement has been declining in irregular pattern.

Governorate of Displacement	IDP HHs Displaced during the week 19 to 25 June 2022	Total ⁴ IDP HHs from 1 Jan to 25 June 2022
Shabwah	77	1,003
Taiz	47	968
Ad Dali	39	720
Marib	32	1,478
Al Hodeidah	15	1,817
Abyan	12	246
Aden	0	189
Al Maharah	0	281
Al Bayda	0	3
Hadramawt	0	94
Al Jawf	0	38
Lahj	0	56
Socotra	0	0
TOTAL	222	6,893

4. New arrivals recorded by IOM DTM within the reporting period. This does not necessarily represent the exact total increase of HHs due to an unknown number of instances of multiple displacements and/or return.

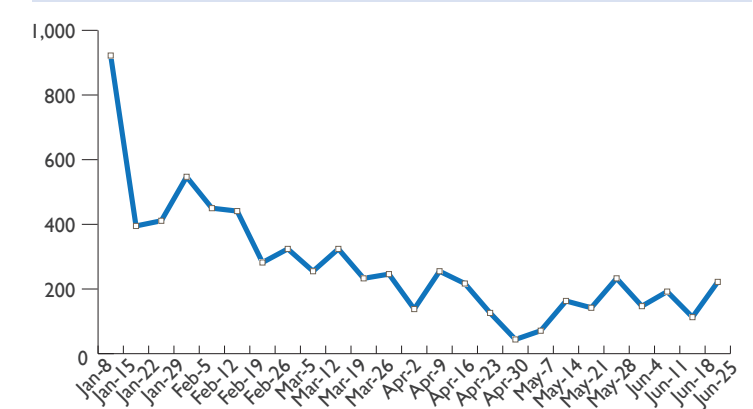
1. Displacement in Yemen refers to the 13 governorates where IOM DTM's team has access, namely: Abyan, Ad Dali', Aden, Al Bayda, Al Hodeidah, Al Jawf, Al Maharah, Hadramawt, Lahj, Ma'rib, Shabwah, Socotra, Ta'iz.
2. IOM DTM estimates that one household represents six individuals.
3. Please note that further additions to previous reporting periods can be reflected in cumulative totals without being individually addressed in narrative reports.

DISPLACED HOUSEHOLDS BY LOCATION OF DISPLACEMENT AND DISTRICT OF ORIGIN



Disclaimer: This map is for illustration purposes only. Names and boundaries on this map do not imply official endorsement or acceptance by IOM.

NUMBER OF IDP HHs DISPLACED PER WEEK



MAIN NEEDS OF IDP HHs DURING THE REPORTING PERIOD

