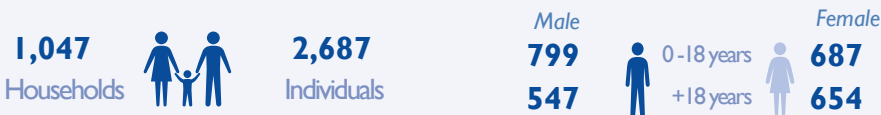




Bor IDP Camp Overview Map



The International Organization for Migration's Displacement Tracking Matrix (IOM DTM) in South Sudan maintains the Biometric Registration database in Bor IDP Site. During maintenance IOM DTM carries out registration of newborn babies, replacement of lost cards, merging of households that have requested to be included in under one household and handling of referred protection cases from protection partners. In **December 2021** the population of Bor IDP Site comprised a total of **2,687 individuals (1,047 households)**.

About 55 per cent of the registered population were found to be youths under the age of 18 years, while 46 per cent were female.

Population Profile

 Male  Female

51% **49%**

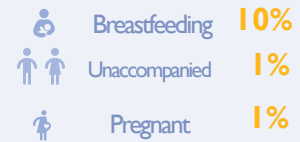
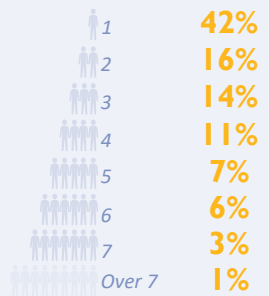
1% 60+ 1%

19% 18-59 **23%**

21% 5-17 **18%**

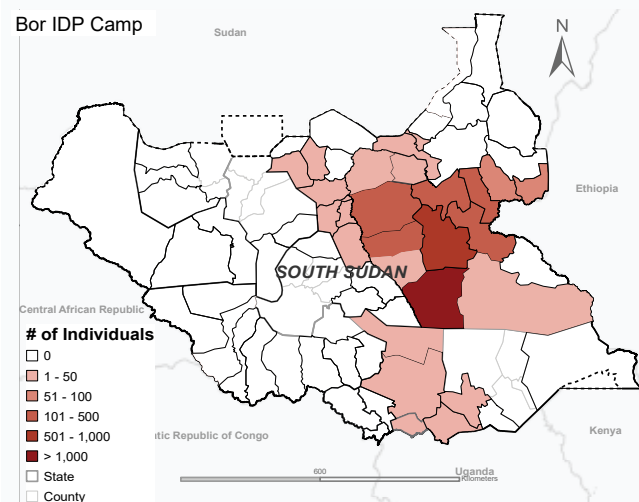
9% 0-4 **8%**

Household size



Percentage calculated based on the overall population


Number of individuals per county of habitual residence



Most of the registered individuals in Bor IDP Site arrived from locations within Bor South followed by those in Uror County. A minority arrived from other locations in South Sudan. The adjacent map represents the habitual residence for 1,662 out of 2,017 registered individuals.

For further information, contact

 southsudandtm@iom.int

 <https://displacement.iom.int/south-sudan>

DTM is supported by



The names and boundaries on the maps in this document do not imply official endorsement or acceptance by the Government of South Sudan or IOM. This document is for planning purposes only. IOM cannot guarantee that this document is error free and therefore will accept no liability for consequential and indirect damages arising from the use of this product.