

## EMERGENCY EVENT TRACKING

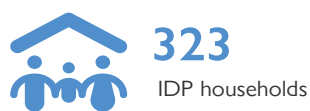
Data collection: 12 April 2022

## CONFLICT



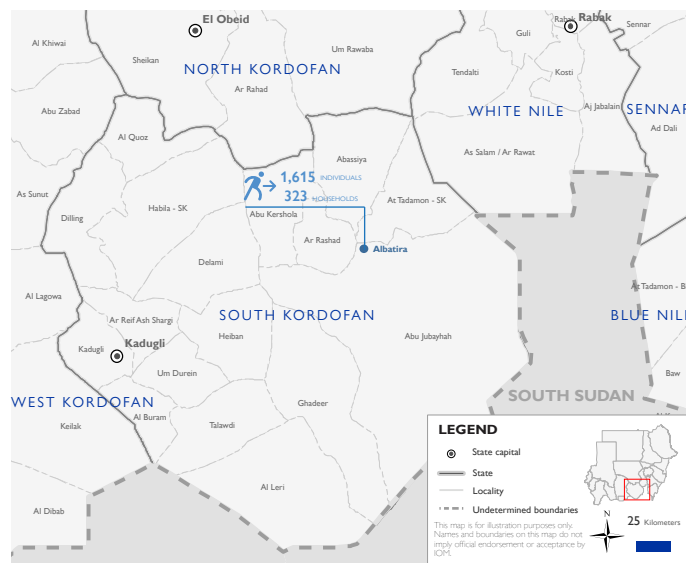
The DTM Emergency Event Tracking (EET) is deployed to track sudden displacement and population movements, provide more frequent updates on the scale of displacement, and quantify the affected population when needed. As a subcomponent of the new Mobility Tracking methodology in Sudan ([Round Three](#)), and activated on a need basis, EET utilises a broad network of key informants to capture best estimates of the affected population presence per location – a useful tool for humanitarian response planning and design.

## Event Overview

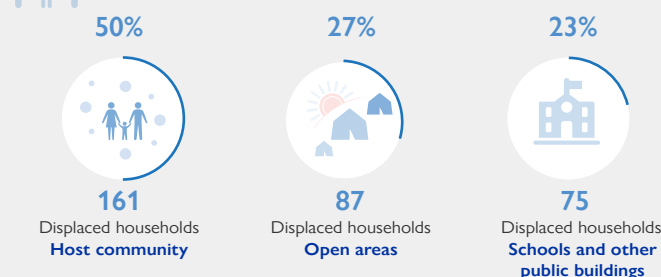


DTM Sudan activated EET to monitor the displacement of individuals affected by an inter-communal dispute involving the Kawahla, Al-Bedaria, and the SPLM Al-Hilu in Ar Rashad locality, South Kordofan on 9 April. The first EET update estimates a total number of 1,615 IDPs (323 households) currently seeking shelter in Albatira village (100%) in Abu Jubayhah locality, South Kordofan. The IDP caseload was originally displaced from Kabos Area (100%) in Ar Rashad, South Kordofan.

Upon verification, field teams indicate one individual has been reportedly killed, no individuals have been injured, and there are 200 reported cases of lost goods, cattle and/or livestock. All displaced individuals are Sudanese nationals. At least 174 cases of additional vulnerabilities in need of assistance and support were identified by key informants through DTM's protection indicator. Additionally, DTM Sudan estimates that there are approximately 242 persons with disabilities among the IDP caseload.\* Based on a ranking scale, the three priority needs across the caseload are Food, Emergency Shelter, and WASH (Water, Sanitation, Hygiene).



## Shelter Indicator

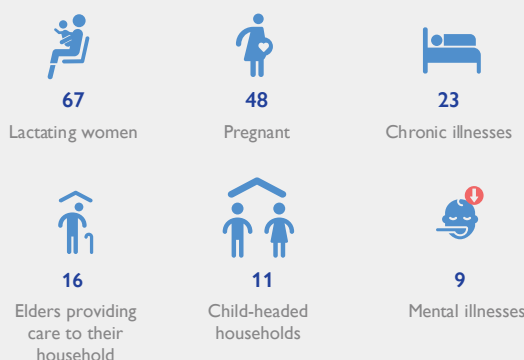


## Priority Needs

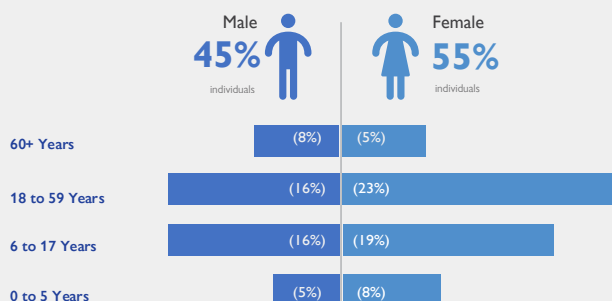
(Ranking scale)



## Vulnerabilities



## Demographics



## Return Intention

Data collected through the return intention indicator suggests that all IDPs (100%) intend to remain in the same location.

### IOM DISCLAIMER

The opinions expressed in the report are those of the authors and do not necessarily reflect the views of the International Organization for Migration (IOM). The designations employed and the presentation of material throughout the report do not imply the expression of any opinion whatsoever on the part of IOM concerning the legal status of any country, territory, city or area, or of its authorities, or concerning its frontiers or boundaries.

IOM is committed to the principle that humane and orderly migration benefits migrants and society. As an intergovernmental organization, IOM acts with its partners in the international community to: assist in the meeting of operational challenges of migration; advance understanding of migration issues; encourage social and economic development through migration; and uphold the human dignity and well-being of migrants.

\* DTM Sudan adopts the WHO global estimate that approximately 15% of the total population are persons with disabilities (PwDs).