

# POPULATION COUNT

## Bentiu IDP Camp

*Data collection October 2021*

### Population overview (October 2021): 118,313 individuals.

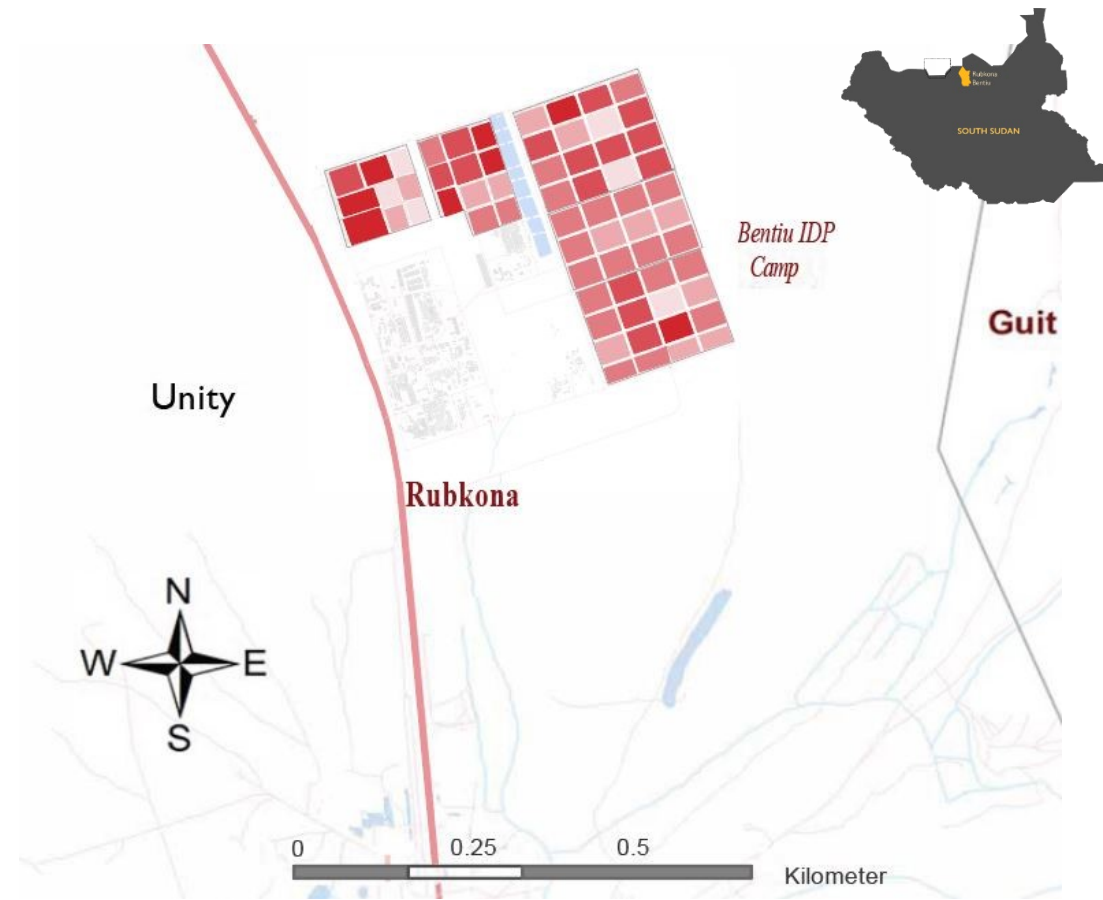
The Bentiu IDP camp was established in December 2013. As of October 2021, 133,029 individuals (30,657 households) are biometrically registered as active beneficiaries in the site representing an increase by 7,177 individuals since September following registration of babies.

Recognizing that there have been significant population changes since the last overall biometric registration / verification, IOM DTM conducts regular population counts to monitor population dynamics and displacement trends showing that the actual number of persons currently living at Bentiu IDP camp remains lower than the registered total.

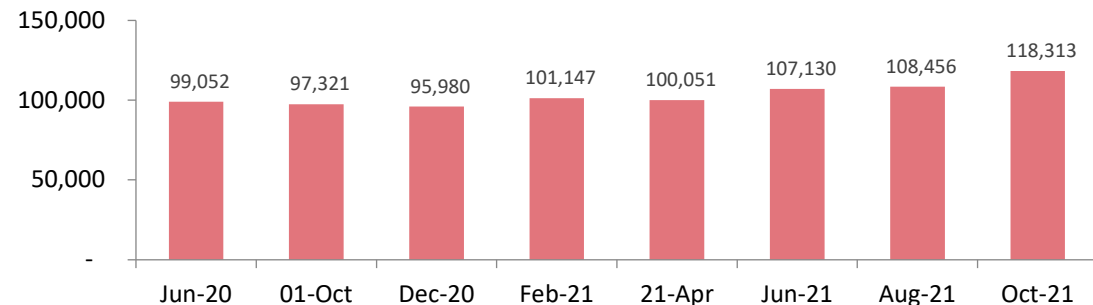
**As per October 2021 population count findings, the Bentiu IDP camp population stands at 118,313 individuals (15,527 households) in 11,920 inhabited shelters (on average 10 individuals per shelter). This represents a nine per cent increase compared to August 2021.**

Looking at the daily mobility dynamic, IOM DTM's daily gate count of individuals entries and exits through the camp's gate shows slightly more exits than entries throughout October 2021 (daily average of 25,168 entries vs 24,376 exits). This is partially related to the fact that certain number of exits take place in early morning hours when due to the curfew, DTM enumerators are not doing the count.

Between 1 September and 31 October 2021, Displacement Site Flow Monitoring (DSFM) at points of entry in Bentiu IDP camp indicated an increase in new entries (130 individuals tracked) compared to findings from August (54 individuals). The majority of new entries during this period were mapped across locations within Unity State (92%), with most arriving from Rubkona (35%), Guit (34%), Koch (18%), and Mayom (5%) counties. Eight per cent of the new entries arrived from Khartoum (Sudan). Most of the population arriving at the camp was comprised of women and girls (68%) compared to 32 per cent males. Among the recorded new entries, 83 per cent reported arrival because of flooding in their areas of habitual residence.



### Monthly population trends at Bentiu IDP Camp, June 2020 – October 2021\*



\*In July, August, September and November (2020) as well as January, March, May, July and September (2021), IOM was unable to conduct population counts.

# POPULATION COUNT

## Bentiu IDP Camp

Data collection October 2021

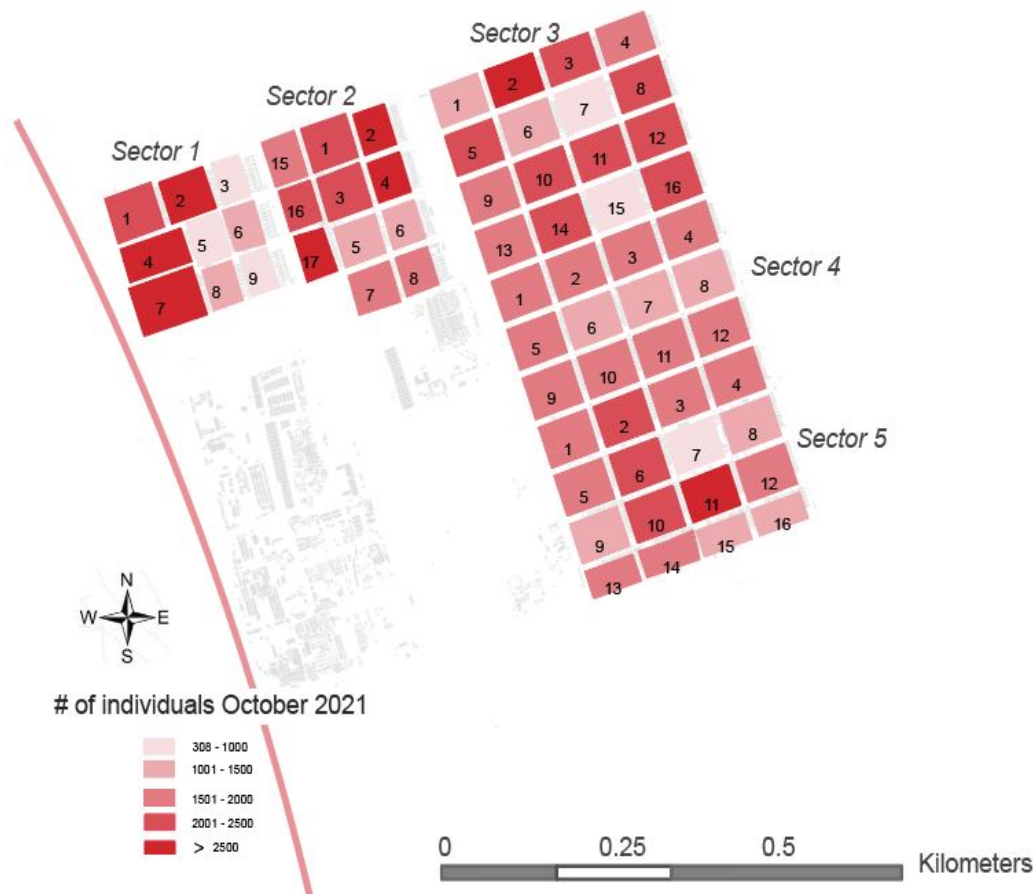


Population in Bentiu IDP Camp (October 2021): 118,313 ind.

Sector 5 29,469	Sector 3 28,978	Sector 2 24,083	Sector 4 19,224	Sector 1 16,559
--------------------	--------------------	--------------------	--------------------	--------------------

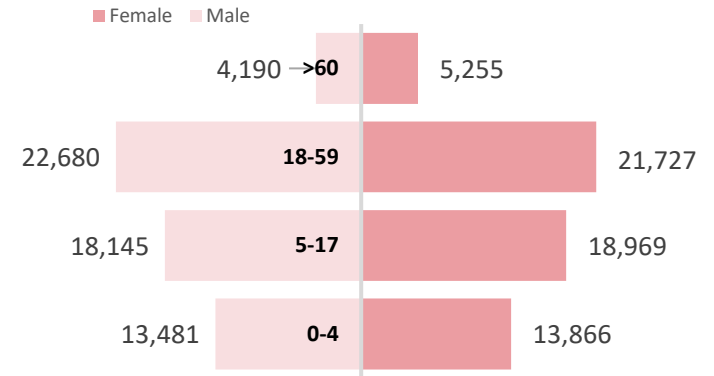
The most populous sector was Sector 5 with 25 per cent of the overall population, followed by Sector 3 (24%) and Sector 2 (20%).

The blocks with the largest populations were recorded across three main sectors, namely: **Sector 1** Block 4 (3,537 individuals), **Sector 2** Block 2 (3,385 individuals), **Sector 1** Block 7 (3,072 individuals), and **Sector 1** Block 2 (2,838) individuals).



### Bentiu IDP Camp, Population by age and sex (October 2021)

**118,313** individuals, 51% Female



For further information, contact [southsudandtm@iom.int](mailto:southsudandtm@iom.int) & visit <https://displacement.iom.int/south-sudan>.

DTM IS SUPPORTED BY

