

EMERGENCY EVENT TRACKING

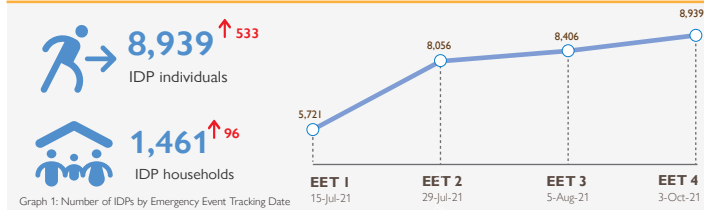
Data collection: 26 September 2021

CONFLICT



The DTM Emergency Event Tracking (EET) is deployed to track sudden displacement and population movements, provide more frequent updates on the scale of displacement, and quantify the affected population when needed. As a subcomponent of the new Mobility Tracking methodology in Sudan (Round Two), and activated on a need basis, EET utilises a broad network of key informants to capture best estimates of the affected population presence per location – a useful tool for humanitarian response planning and design.

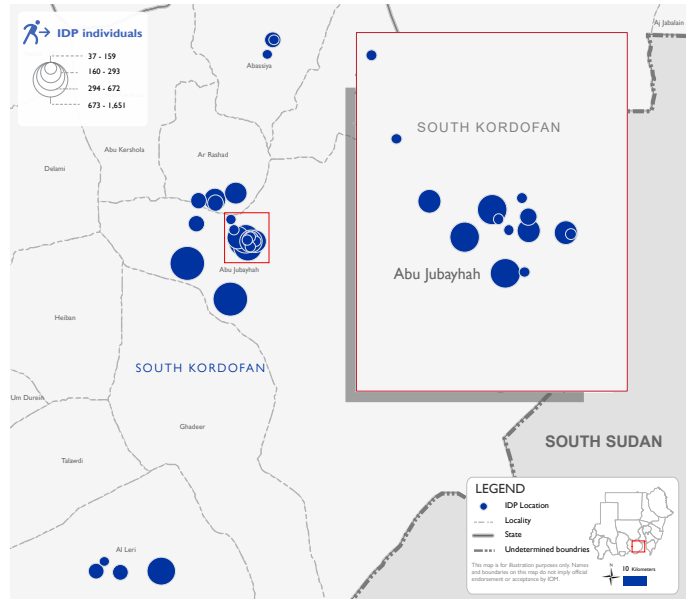
Event Overview



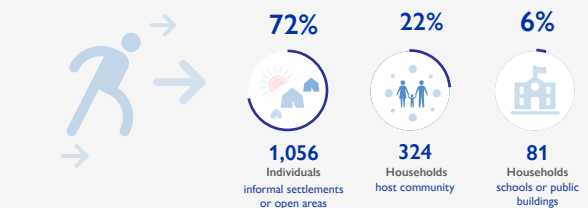
DTM teams activated EET to monitor the displacement of individuals affected by inter-communal violence across villages in Kalogi, South Kordofan over the issue of land ownership. Clashes erupted on 5 June 2021 involving the Kenana, Kawahla, and Hawazma (Dar Ali) tribes. For more information, please see [EET Kalogi, South Kordofan Update 003](#).

The fourth EET update estimates a total number of 8,939 individuals (1,461 households) currently seeking shelter in Alrhmaniya (18%), Merefaein (14%), Debibet Juma (8%), Um Kadadah (6%), Hai Um Naeem (6%), and Um Mawan (5%), Hai Algalah (4%), Hai Almadars (3%), among other villages across the Abu Jubayhah locality (11%), as well as across several locations within the Al Leri (11%), Rashad, (10%), and Abassiya (4%) localities in South Kordofan. The increase in the IDP caseload can be attributed in part to the additional three locations covered by the field team since the previous update.

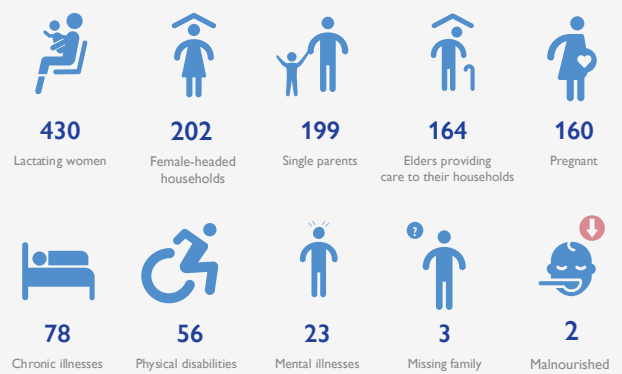
Field teams indicate that 32 individuals were killed, 12 individuals were injured, and 563 individuals report lost goods/cattle/livestock. All displaced individuals are Sudanese nationals. DTM teams identified at least 1,317 cases of additional vulnerabilities in need of assistance and support. Consistent with the previous EET, and based on a ranking scale, the three priority needs across the caseload are Emergency Shelter, Food, and Non-Food Items.



Shelter Indicator



Vulnerabilities

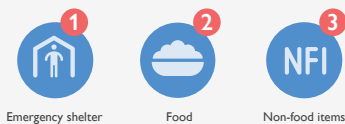


IOM DISCLAIMER

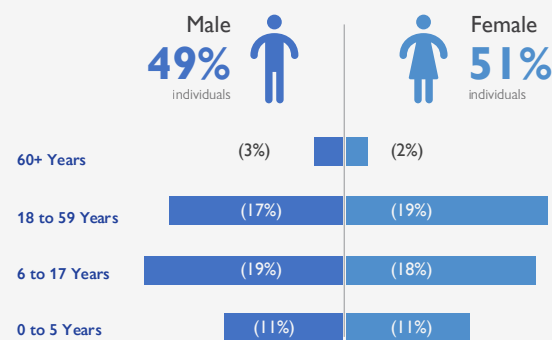
The opinions expressed in the report are those of the authors and do not necessarily reflect the views of the International Organization for Migration (IOM). The designations employed and the presentation of material throughout the report do not imply the expression of any opinion whatsoever on the part of IOM concerning the legal status of any country, territory, city or area, or of its authorities, or concerning its frontiers or boundaries.

IOM is committed to the principle that humane and orderly migration benefits migrants and society. As an intergovernmental organization, IOM acts with its partners in the international community to: assist in the meeting of operational challenges of migration; advance understanding of migration issues; encourage social and economic development through migration; and uphold the human dignity and well-being of migrants.

Priority Needs (Ranking scale)



Demographics



Return Intention

Data collected through the return intention indicator suggests that all IDPs (100%) intend to return to their location of origin upon improvement of the security situation.