

# POPULATION COUNT

## Bentiu IDP Camp

Data collection August 2021

### Population overview (August 2021): 108,456 individuals.

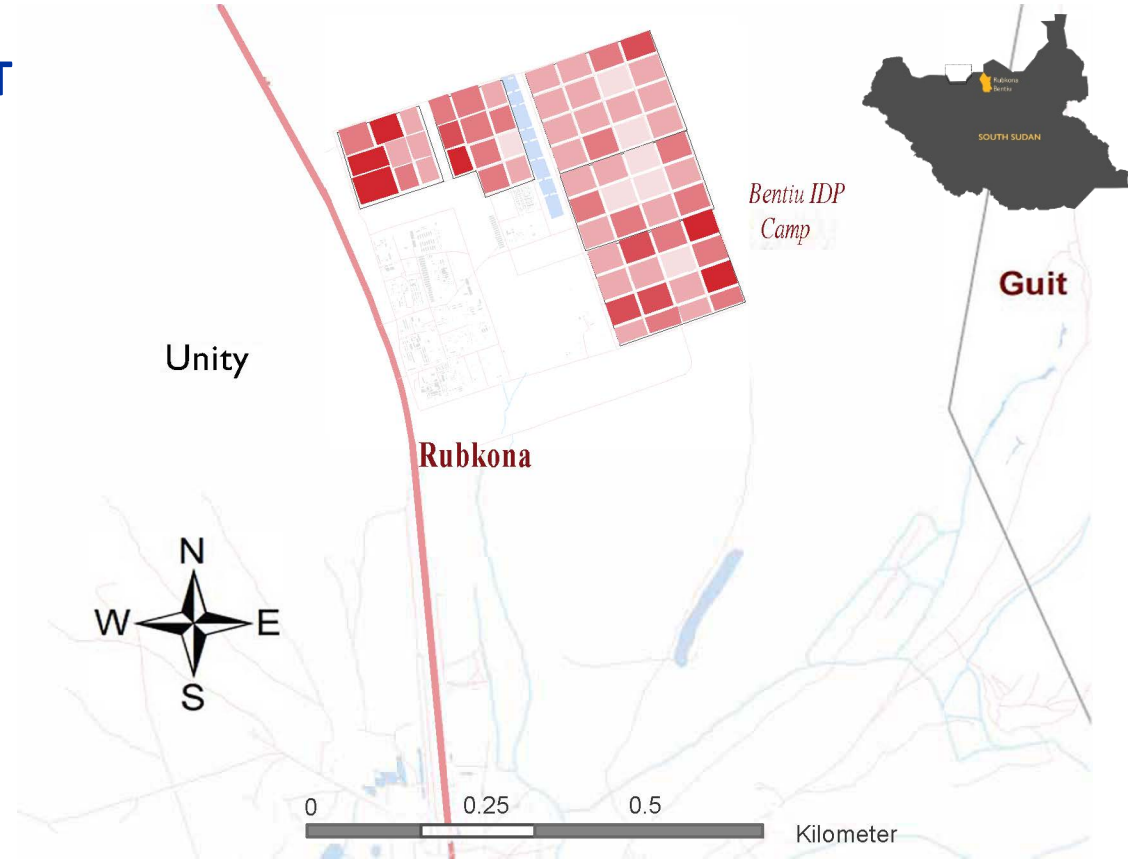
The Bentiu IDP camp was established in December 2013. As of August 2021, 125,852 individuals (30,507 households) are biometrically registered as active beneficiaries in the site representing a decrease by 3,041 individuals since beginning of June 2021 due to beneficiaries relocating to their areas of origin.

Recognizing that there have been significant population changes since the last overall biometric registration / verification, IOM DTM conducts regular population counts to monitor population dynamics and displacement trends showing that the actual number of persons currently living at Bentiu IDP camp remains lower than the registered total.

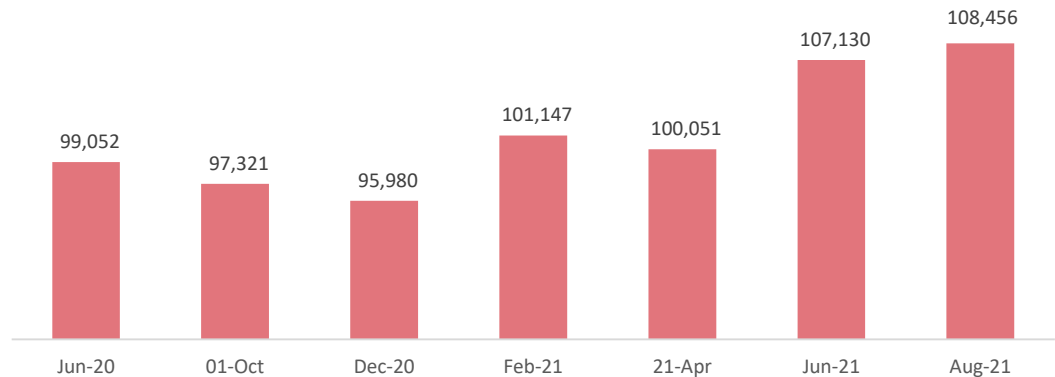
**As per August 2021 population count findings, the Bentiu IDP camp population stands at 108,456 individuals (16,019 households) in 12,071 inhabited shelters (on average 7 individuals per shelter). This represents a seven per cent increase since June 2021.**

IOM DTM's daily count of individual entries and exits through the camp's gates recorded more exits than entries in August 2021: a daily average of 18,993 entries compared to 18,487 exits.

Displacement Site Flow Monitoring (DSFM) at points of entry/exit in Bentiu IDP camp indicated a decrease of intended permanent exits in August (67 individuals tracked) compared to findings from June (176 individuals). The majority of permanent exits during this month were mapped across locations within Unity State (51%), with most heading to Rubkona (29%), Guit (19%) and Koch (3%) counties. Two thirds of the leaving population was comprised of women and girls (67%) compared to 33 per cent males. Among permanent exits recorded in August, 36 per cent reported leaving because they felt living conditions had improved at destinations of return ("life is now better at destination").



### Monthly population trends at Bentiu IDP Camp, June 2020 – August 2021\*



\*In July, August, September and November (2020) as well as January, March and May (2021), IOM was unable to conduct population counts.

# POPULATION COUNT

## Bentiu IDP Camp

Data collection August 2021

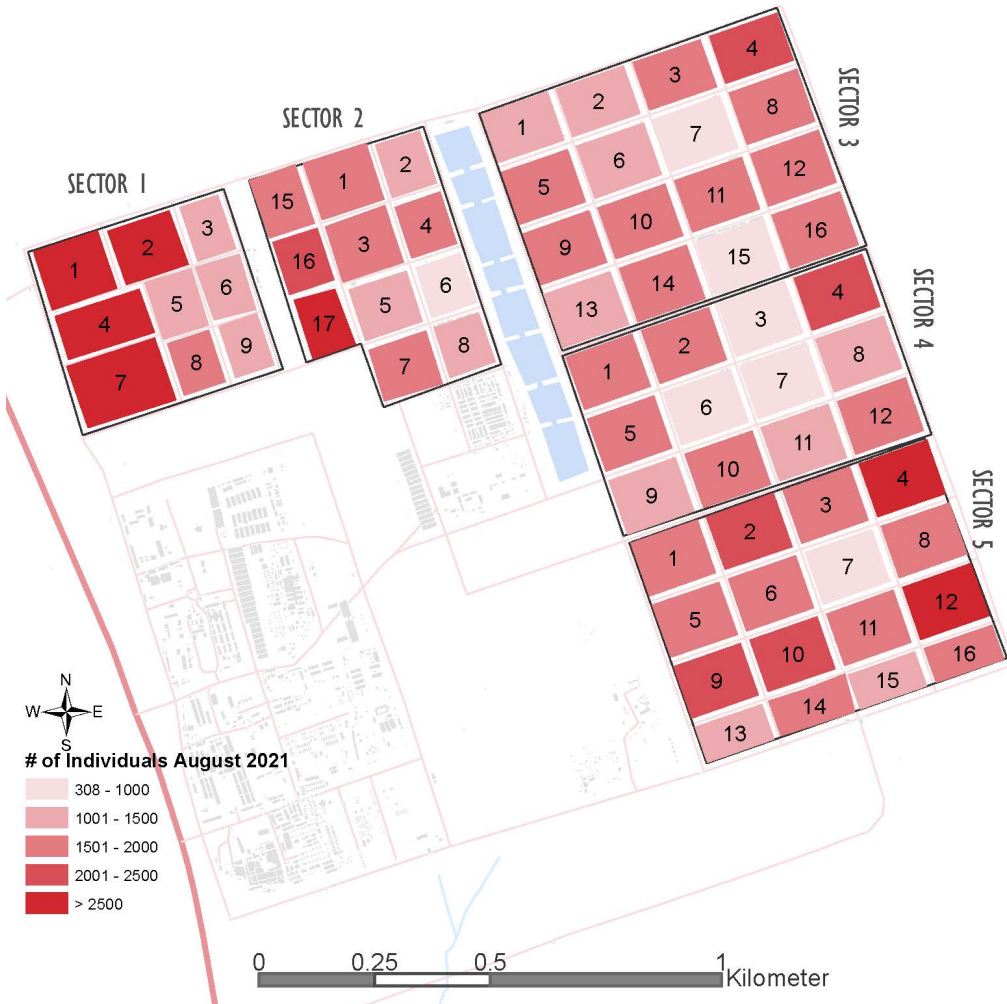


Population in Bentiu IDP Camp (August 2021): 108,456 ind.

Sector 5 28,209	Sector 3 24,490	Sector 1 21,499	Sector 4 17,253	Sector 2 17,005
--------------------	--------------------	--------------------	--------------------	--------------------

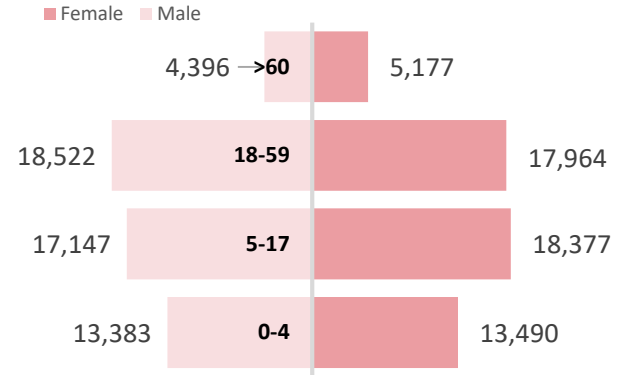
The most populous sector was Sector 5 with 26 per cent of the overall population, followed by Sector 3 (23%) and Sector 1 (20%).

The blocks with the largest populations were recorded across three main sectors, namely: **Sector 1** Block 7 (4,576 individuals), Block 4 (3,768), Block 1 (3,204) and Block 2 (2,927). **Sector 5** Block 4 (2,834) and Block 12 (2,547) individuals. **Sector 4** Block 4 (2,209) and **Sector 2** Block 17 (2,156) individuals).



### Bentiu IDP Camp, Population by age and sex (August 2021)

108,456 individuals, 51% Female



For further information, contact [southsudandtm@iom.int](mailto:southsudandtm@iom.int) & visit <https://displacement.iom.int/south-sudan>.

DTM IS SUPPORTED BY

