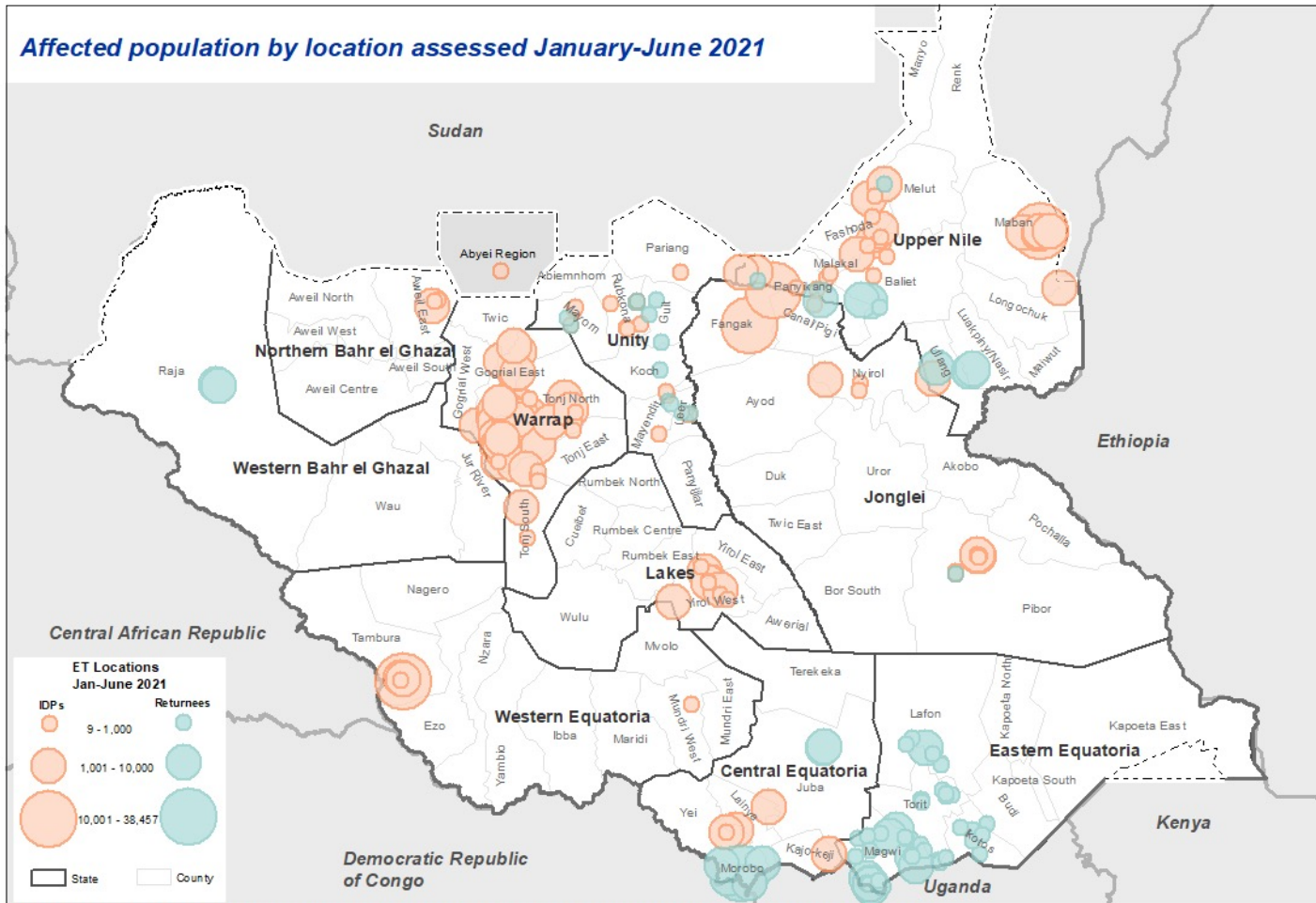


10 States 39 Counties 92 Payams 230 Locations 49 Displacement Sites 411,105 IDPs / 90,764 Returnees

[Click here for Dataset](#)

Between January and June 2021, DTM reported on **268** spontaneous and **11** organized instances of population movement comprising **411,105 IDPs** (82%) and **90,764 returnees** (18%) across ten states and Abyei Administrative Area. Localized conflict accounted for most displacement (60%), while a further 20 per cent was the result of natural disaster (flooding). Forty-four per cent of the IDPs were displaced by localized conflict to locations in Warrap, and 10 per cent in Upper Nile.

Affected population by location assessed January-June 2021



Disclaimer: this map is for illustration purposes only. Names and boundaries on this map do not imply official endorsement or acceptance by IOM. The final boundary between the republic of South Sudan and the Republic of Sudan, as well as the final status of Abyei Administration Area, have not yet been determined.

Event Tracking methodology: IOM DTM carries out **rapid Event Tracking assessments** to verify and map instances of new displacement or return of over 50 households upon receipt of relevant alerts. IOM enumerators visit or remotely assess IDP / returnee locations and consult local key informants including community representatives, local authorities or humanitarian partners. The findings are triangulated with secondary sources, such as reports by other humanitarian actors, to ensure accurate, actionable and up-to-date information to the best of DTM's

knowledge. All data reflects the situation at the time of the assessment, and IOM cannot guarantee comprehensive coverage of displacement or return events countrywide. **Event Tracking complements DTM's countrywide Mobility Tracking assessments**, which are carried out at regular intervals to update South Sudan's comprehensive IDP and returnee baselines. [Click on the links to access the latest Mobility Tracking dataset and data release \(3,038 villages / neighborhoods and displacement sites\).](#)



18%

Returnees

IDPs

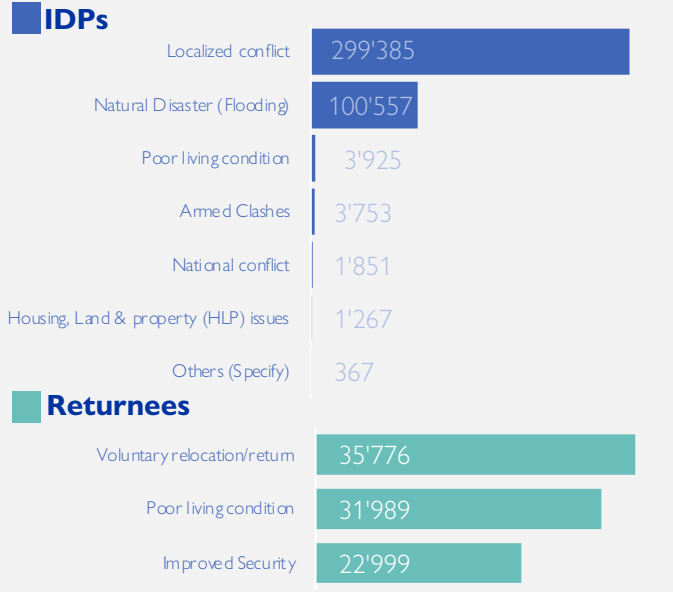
82%



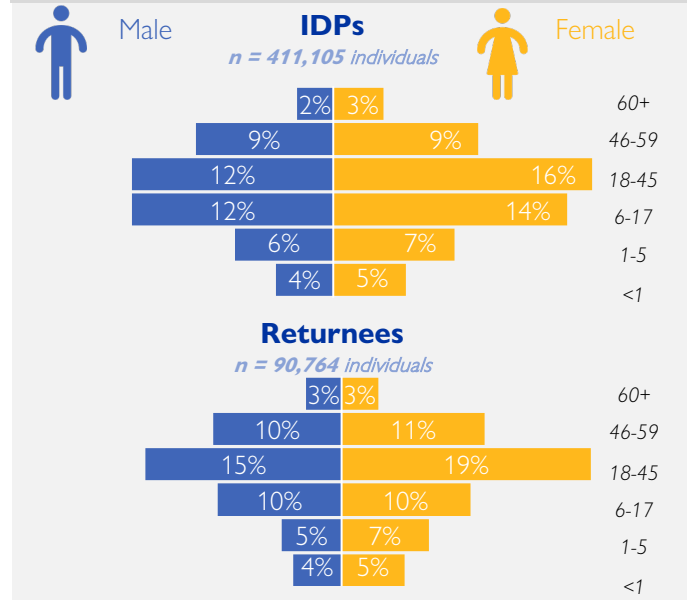
90'764

411'105

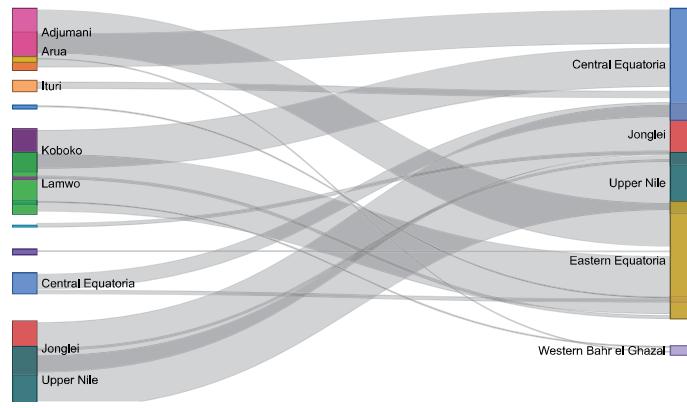
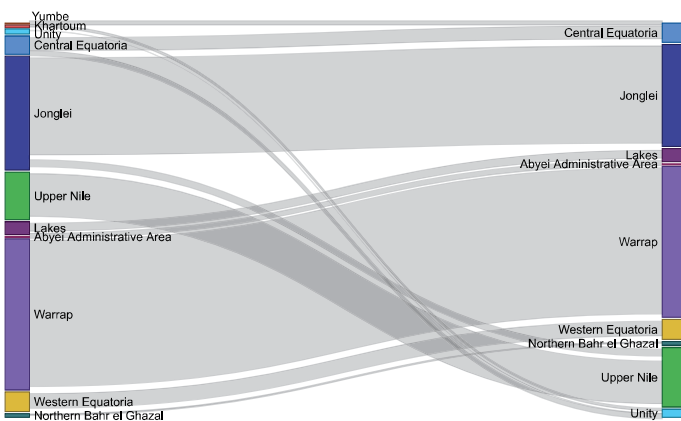
Reason for movement



Demographics



Areas of departure and destination



Fifty-seven per cent of the IDPs were displaced to locations within the same county and payam, while 25 per cent moved to the same county but different payam. Fourteen per cent represent displacement from different counties.

Seventy-two per cent of the returnees arrived from abroad, mainly Uganda (87%) and Sudan (6%). While 20 per cent returned from the same county, 5 per cent returned from a different county and 3 per cent arrived from different state.

DTM IS SUPPORTED BY



For more DTM reports and products please visit displacement.iom.int/south-sudan or contact us on SouthSudanDTM@iom.int