

Households:
750



Individuals:
5,655



Casualties:
65



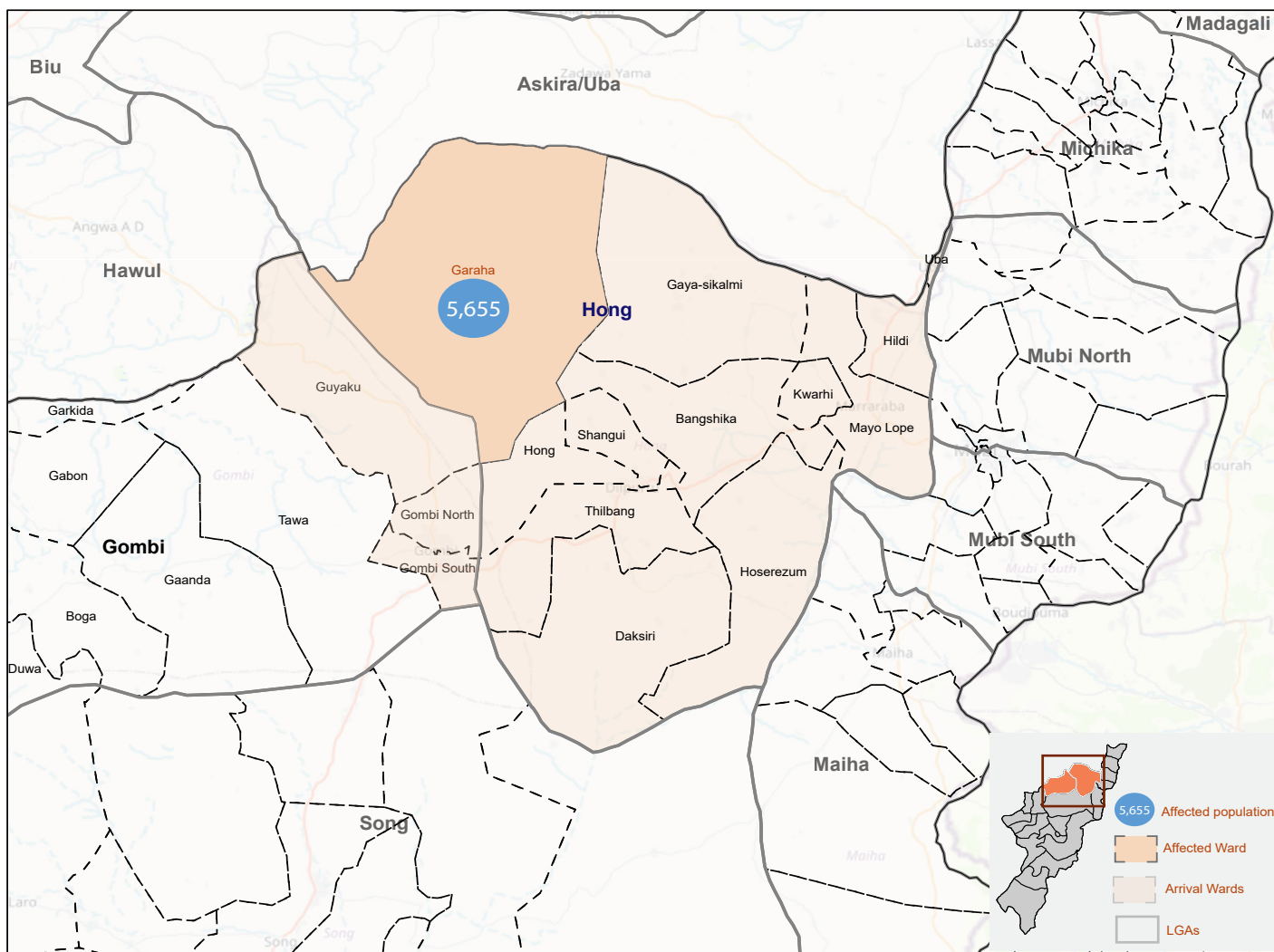
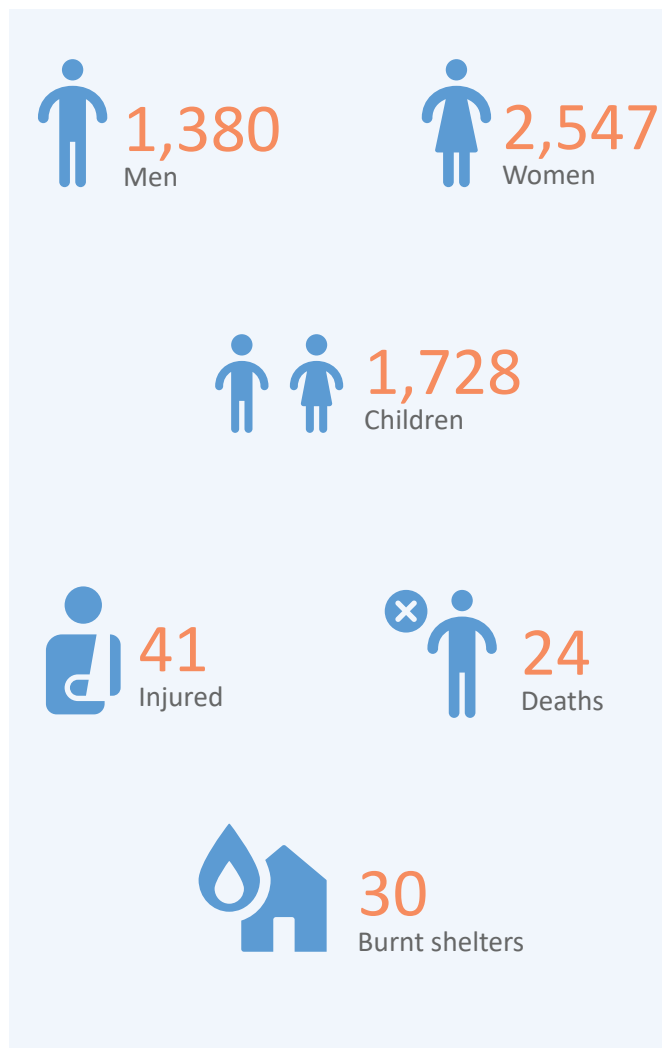
Movement Trigger:
Armed Attack

OVERVIEW

Surging communal violence between ethnic and religious groups, and long-standing conflicts between farming communities and nomadic herders are prevalent across north-east Nigeria. These conflicts are predominantly centered on disputes over land and cause great insecurity and widespread displacement across the region.

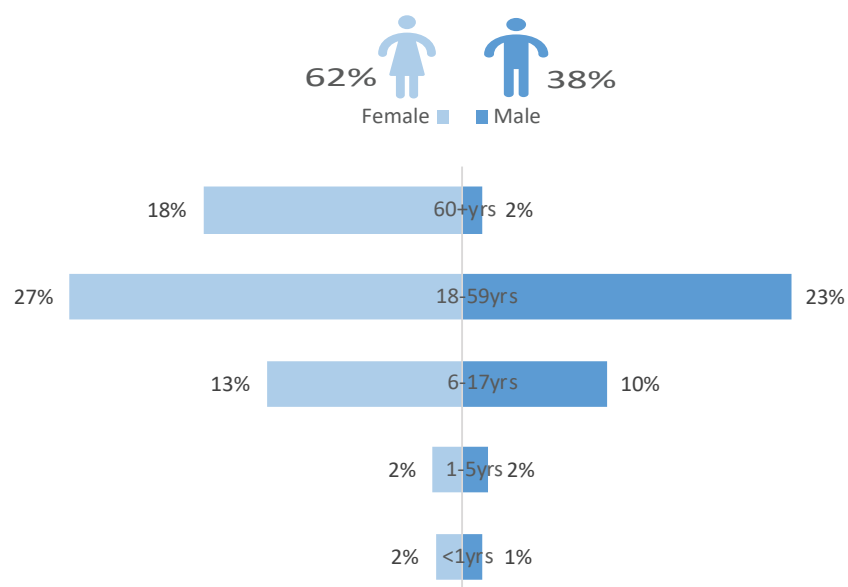
On 07 July 2021, there was an attack by herdsmen in Dabna community of Garaha Ward in Hong LGA of Adamawa State which has continued to induce a large-scale displacement towards the neighboring LGAs and Wards. Following this event, rapid assessments were conducted by DTM (Displacement Tracking Matrix) field staff to inform the humanitarian community and government partners, and enable targeted response. Flash reports utilize direct observation and a broad network of key informants to gather representative data and collect information on the number, profile, and immediate needs of affected populations.

Between 07 and 14 July 2021, the recorded displacements involved a total of 5,655 individuals. A total of 70 individuals left Badakosh ward of Bali LGA in Taraba State to Mbayam Ward of Logo LGA in Benue State and 226 individuals were displaced from Maihula Ward in Taraba state to Nzorov ward in Guma LGA in Benue State. A total of 65 casualties were recorded and 30 shelters were damaged. According to the rapid assessment, 34 percent of IDPs mentioned shelter as their primary need, followed by medical services (reported by 26% of IDPs), food (reported by 22% of IDPs), and NFI (reported by 18% of IDPs).

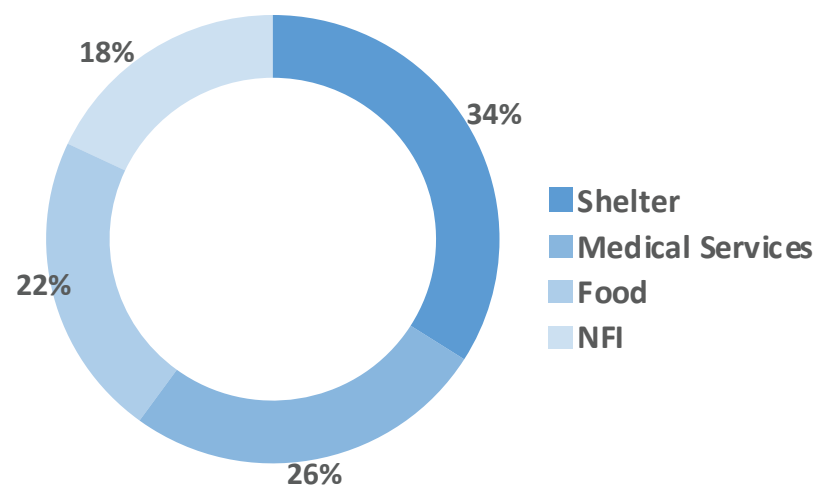


The map is for illustration purposes only. The depiction and use of boundaries, geographic names and related data shown are not warranted to be error free nor do they imply judgment on the legal status of any territory, or any endorsement or acceptance of such boundaries by IOM.

AGE CLASSIFICATION (FIG. 1)



MOST NEEDED ASSISTANCE (FIG. 2)



"When quoting, paraphrasing, or in any other way using the information mentioned in this report, the source needs to be stated appropriately as follows: "Source: Displacement Tracking Matrix (DTM) of the International Organization for Migration (IOM), July 2021.""