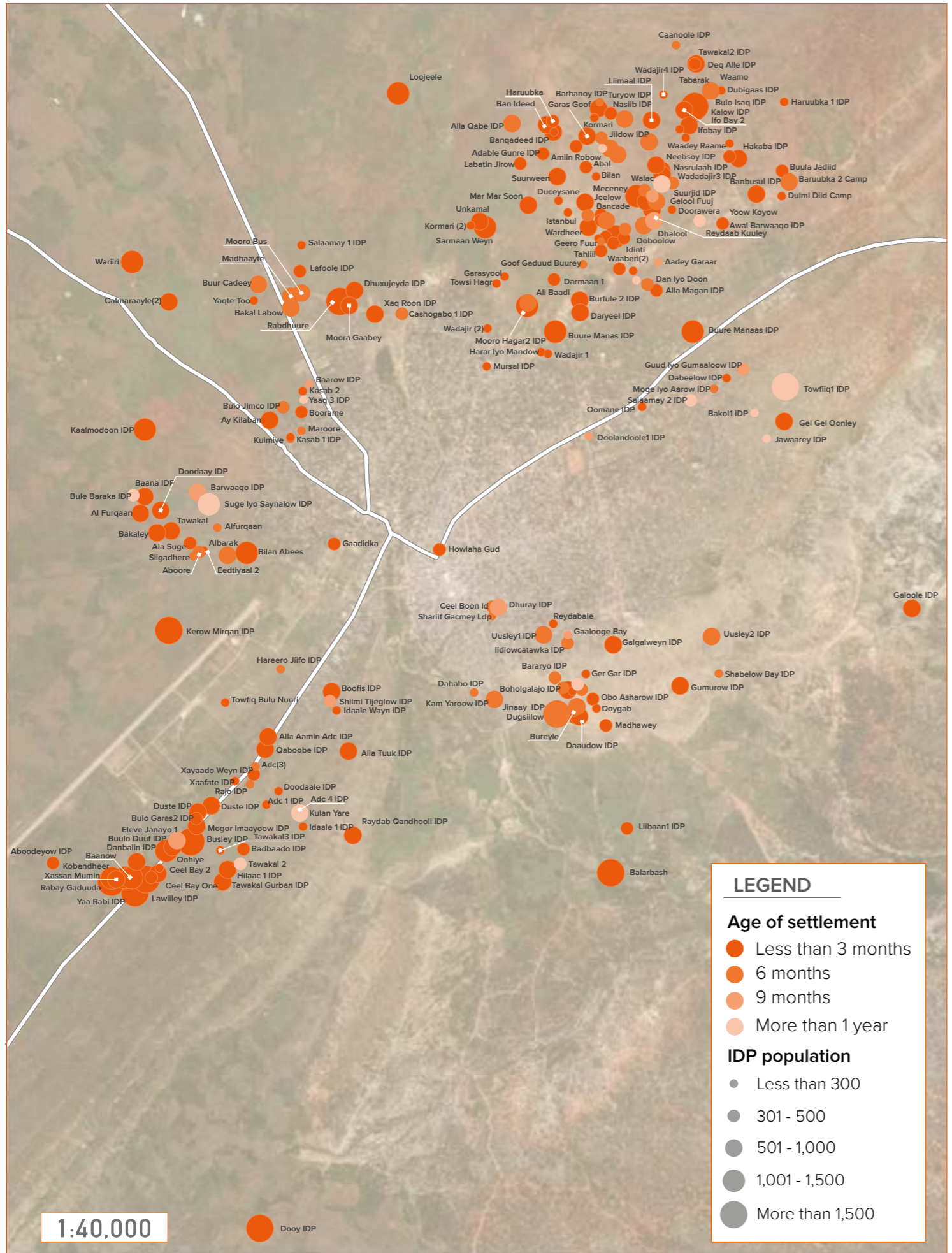


Over the past six months, severe drought conditions have contributed to the displacement of more than a half a million people across the country. Baidoa town (Baidoa district, Bay region), currently hosts one of the highest caseloads of drought displaced people in the country. In order to better understand the displacement, DTM has rolled out the Emergency Tracking Tool (ETT). This tool allows partners to have data on the number of people currently residing in each displacement site in order to plan and monitor service delivery. Baidoa situation report is the first in a series of reports on populated places and data emerging from Emergency Tracking Tool (ETT).



142,475
Number of IDPs in Baidoa town as of 17th May 2017

247
IDP sites

19 Data collection was conducted between 10th and 17th May 2017, through key informant interviews.

AGE DISAGGREGATION OF IDPs

Children (0-5 years)	40,222
Children (6-18 years)	42,431
Adults (19-59 years)	54,373
Elders (60+ years)	5,327
Unaccompanied children (below 18 years)	122

AGE OF SETTLEMENT

Less than 3 months	66%
6 Months	21%
9 Months	4%
Greater than a year	9%

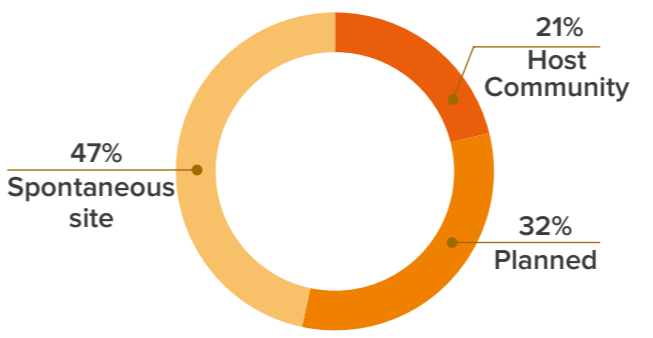
*as a fraction of total IDPs

PRIORITY NEEDS**

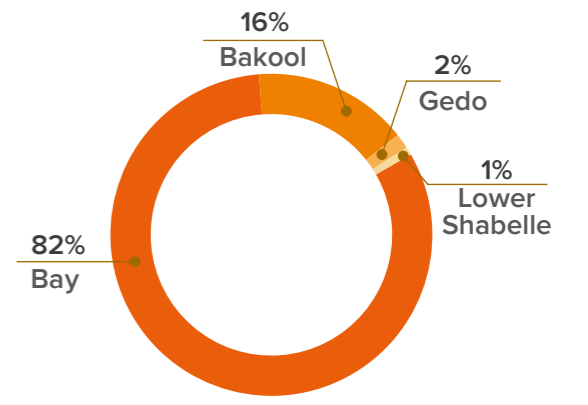
Food	243
NFIs	158
Shelter	132
Sanitation and Hygiene	83

**Number of affected IDP sites

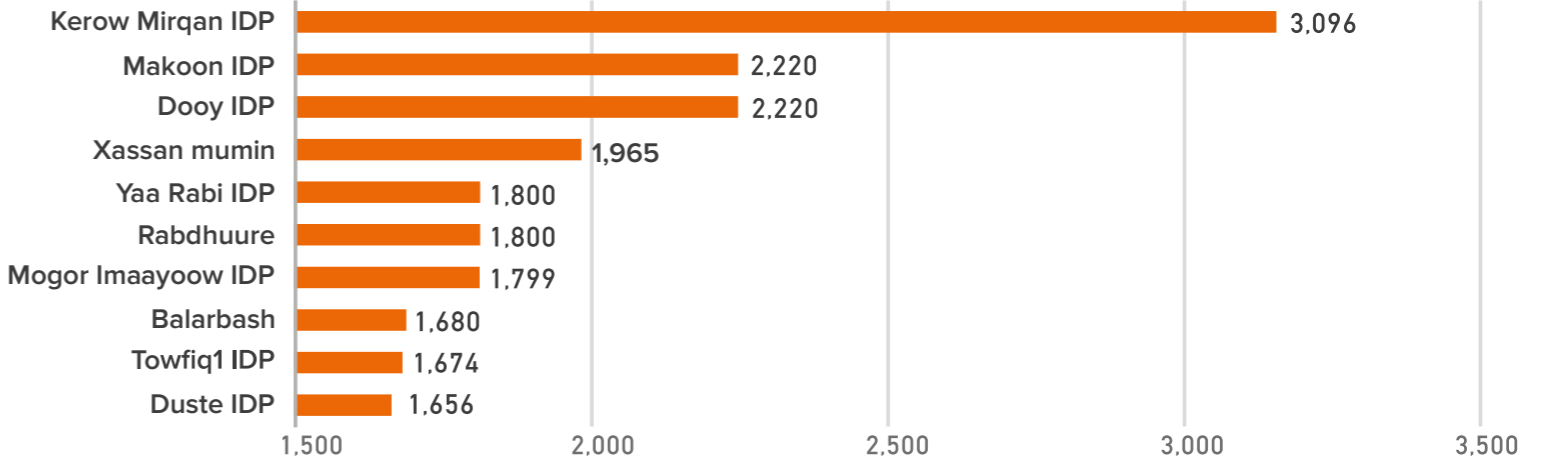
IDP SETTLEMENTS BY TYPE



ORIGIN OF IDPs BY REGION



MOST POPULATED IDP SITES



FOR MORE INFORMATION

iomsomaliatdm@iom.int
<http://www.globaldtm.info/somalia>
 Data-set is available at <https://goo.gl/I7w1kC>

