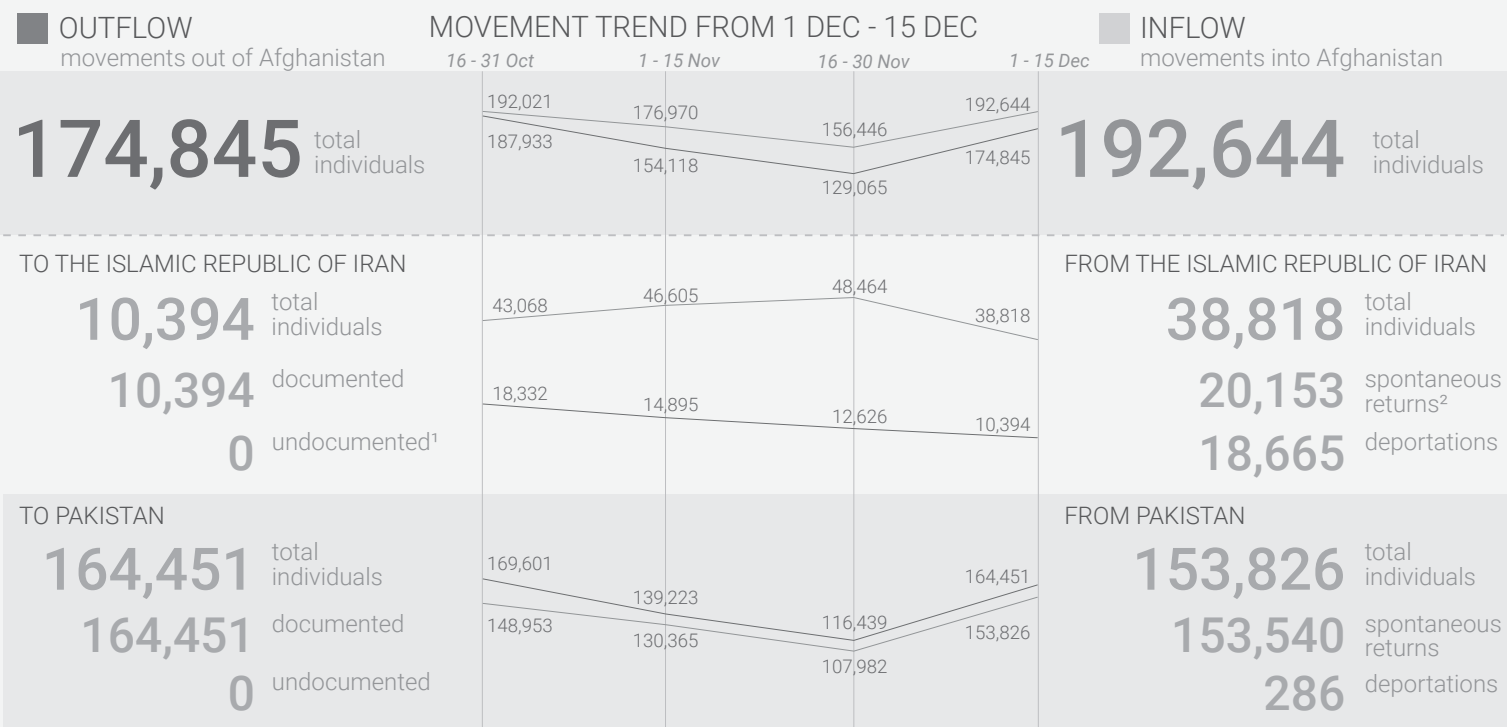


MOVEMENT SUMMARY - AFGHANISTAN TO AND FROM NEIGHBORING COUNTRIES

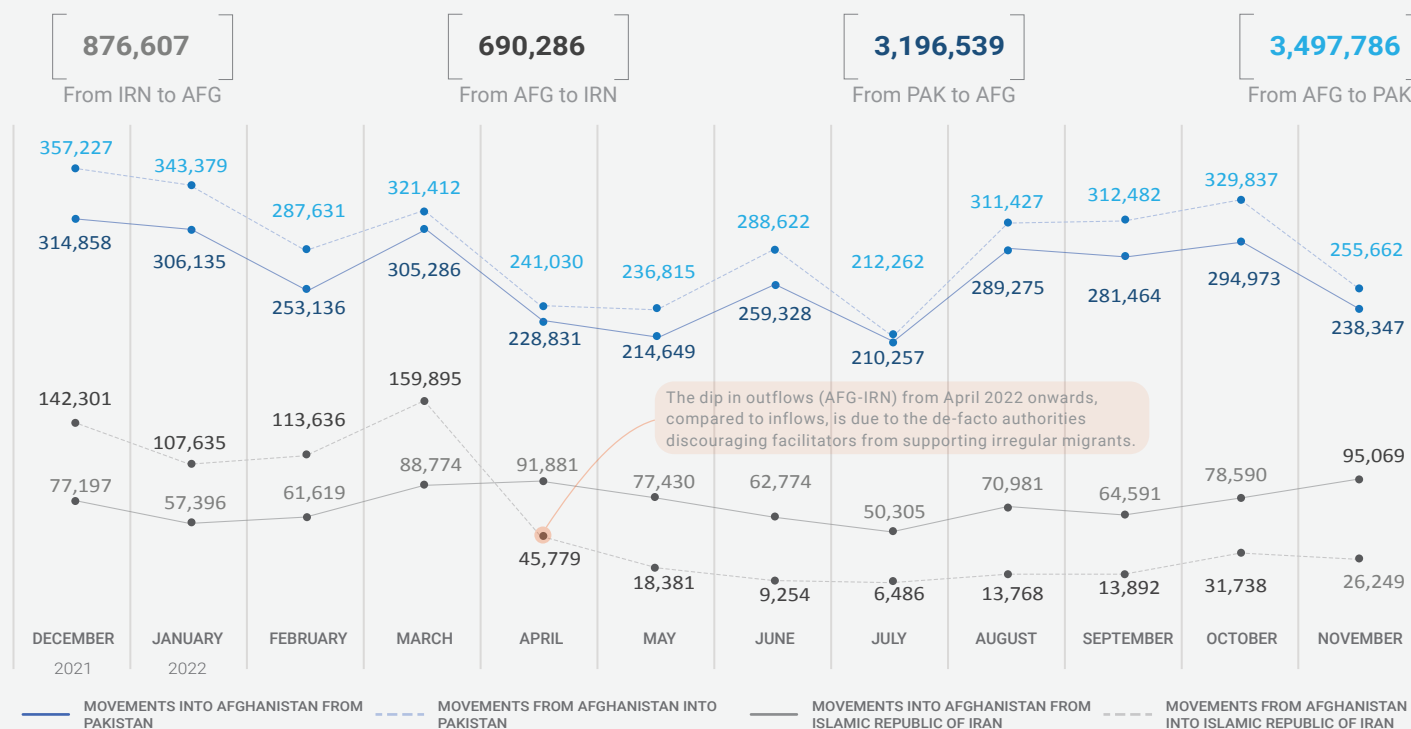
Acknowledging the deep rooted generosity of the people and the governments of the Islamic Republic of Iran and Pakistan for hosting millions of Afghan migrants and refugees for over four decades, this document captures present mobility and displacement trends between Afghanistan, the Islamic Republic of Iran and Pakistan.



THIS PERIOD'S HIGHLIGHTS

- The reporting period observed a decrease in inflow movement between the Islamic Republic of Iran and Afghanistan, with 38,818 individuals compared to 48,464 during the previous two-week period. The outflows also decreased from 12,626 to 10,394 during this reporting period.
- Crossings between Afghanistan and Pakistan increased in both outflows and inflows, with an average of 10,963 outflows per day compared to 7,763 in the previous two-week period and an average of 10,255 inflows per day compared to 7,199 in the previous reporting period.

TRENDS OF MOVEMENT IN AND OUT OF AFGHANISTAN IN THE LAST 1 YEAR (DEC 2021 - NOV 2022)



3 MONTHS MOVEMENT SUMMARY (AFG-PAK)

	September	October	November
Outflow	312,482	329,837	255,662
Inflow	281,464	294,973	238,347

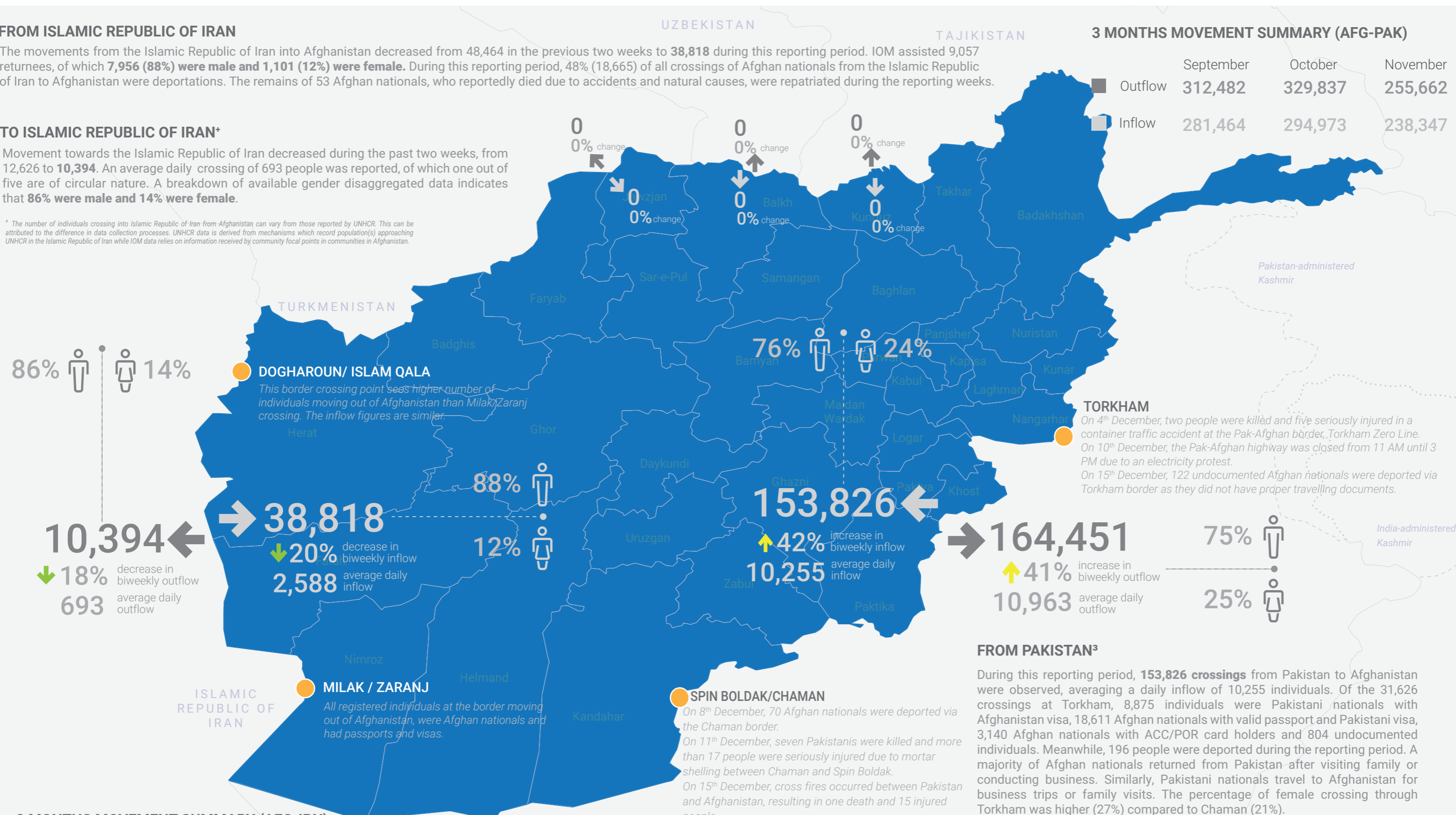
FROM ISLAMIC REPUBLIC OF IRAN

The movements from the Islamic Republic of Iran into Afghanistan decreased from 48,464 in the previous two weeks to **38,818** during this reporting period. IOM assisted 9,057 returnees, of which **7,956 (88%) were male and 1,101 (12%) were female**. During this reporting period, 48% (18,665) of all crossings of Afghan nationals from the Islamic Republic of Iran to Afghanistan were deportations. The remains of 53 Afghan nationals, who reportedly died due to accidents and natural causes, were repatriated during the reporting weeks.

TO ISLAMIC REPUBLIC OF IRAN*

Movement towards the Islamic Republic of Iran decreased during the past two weeks, from 12,626 to **10,394**. An average daily crossing of 693 people was reported, of which one out of five are of circular nature. A breakdown of available gender disaggregated data indicates that **86% were male and 14% were female**.

* The number of individuals crossing into Islamic Republic of Iran from Afghanistan can vary from those reported by UNHCR. This can be attributed to the difference in data collection processes. UNHCR data is derived from mechanisms which record population(s) approaching UNHCR in the Islamic Republic of Iran while IOM data relies on information received by community focal points in communities in Afghanistan.



86% 14%

DOG HAROUN/ ISLAM QALA

This border crossing point sees higher number of individuals moving out of Afghanistan than Milak/Zaranj crossing. The inflow figures are similar.

38,818

↓ 20% decrease in biweekly inflow
2,588 average daily inflow

10,394

↓ 18% decrease in biweekly outflow
693 average daily outflow

MILAK / ZARANJ

All registered individuals at the border moving out of Afghanistan, were Afghan nationals and had passports and visas.

88% 12%

SPIN BOLDAK/CHAMAN

On 8th December, 70 Afghan nationals were deported via the Chaman border.
On 11th December, seven Pakistanis were killed and more than 17 people were seriously injured due to mortar shelling between Chaman and Spin Boldak.
On 15th December, cross fires occurred between Pakistan and Afghanistan, resulting in one death and 15 injured people.

153,826

↑ 42% increase in biweekly inflow
10,255 average daily inflow

164,451

↑ 41% increase in biweekly outflow
10,963 average daily outflow

75%

25%

3 MONTHS MOVEMENT SUMMARY (AFG-IRN)

	September	October	November
Outflow	13,892	31,738	26,249
Inflow	64,591	78,590	95,069

TO PAKISTAN³

Movements from Afghanistan into Pakistan increased when compared to the last two weeks and the reporting period saw a total of **164,451 crossings**. Among the 32,951 individuals who crossed from Torkham, 5,662 were Pakistani nationals, 24,567 Afghan nationals with valid visas, 8 individuals with third country passport, 1,452 Afghan patients who required medical treatment in Pakistan, along with 1,262 who were attendants (person who accompanies a sick person/patient). Out of the total individuals, **75% were male and 25% female**. Similarly to the inflow gender ratio, the percentage of female crossing through Torkham was higher (27%) compared to Chaman (23%).

FROM PAKISTAN³

During this reporting period, **153,826 crossings** from Pakistan to Afghanistan were observed, averaging a daily inflow of 10,255 individuals. Of the 31,626 crossings at Torkham, 8,875 individuals were Pakistani nationals with Afghanistan visa, 18,611 Afghan nationals with valid passport and Pakistani visa, 3,140 Afghan nationals with ACC/POR card holders and 804 undocumented individuals. Meanwhile, 196 people were deported during the reporting period. A majority of Afghan nationals returned from Pakistan after visiting family or conducting business. Similarly, Pakistani nationals travel to Afghanistan for business trips or family visits. The percentage of female crossing through Torkham was higher (27%) compared to Chaman (21%).

The boundaries and names shown and the designations used on this map do not imply official endorsement or acceptance by IOM. Line of Control: Dotted line represents approximately the Line of Control in Jammu and Kashmir agreed upon by India and Pakistan. The final status of Jammu and Kashmir has not yet been agreed upon by the parties.

¹Undocumented individual: An individual of Afghan origin in Pakistan or Islamic Republic of Iran who does not have valid documents. Valid documentation includes: a valid Proof of Registration (PoR) card issued by the Government of Pakistan, an Afghan Citizen Card (ACC), and either a valid Pakistan visa, an Amayesh card, or a valid Iranian visa to remain/stay in Pakistan or the Islamic Republic of Iran.
²Spontaneous returns: Individuals crossing the border to Afghanistan willingly and without being forced or coerced. These individuals can be documented or undocumented.
³The number of individuals crossing into and from Pakistan are based on the compilation of numbers coordinated between IOM Afghanistan and IOM Pakistan. The numbers do not reflect nationalities and may include Afghans, Pakistanis and third country nationals.

BASELINE MOBILITY ASSESSMENT (BMA) AND EMERGENCY COMMUNITY-BASED NEEDS ASSESSMENT (eCBNA)

The BMA assessment tracks mobility, provides information on population estimates, locations and geographic distribution of displaced, return and migrant populations, reasons for displacement, places of origin and periods of displacement. The CBNA documents vulnerabilities and multisectoral needs. Data is collected at the settlement level, through focus group discussions with community focal points and direct observations. Round 15⁴ of the BMA and eCBNA were conducted in March and April 2022.

IDP ARRIVALS

1,804,363 Jan 2021 - Apr 2022
5,894,220 2012 - 2022 (April)

Arrival IDPs are Afghans who fled their communities of origin and have arrived in the assessed locations within Afghanistan as a result of, or in order to avoid, the effects of armed conflict, generalized violence, human rights violations, protection concerns, or natural and human-made disasters.

INDIVIDUALS MOVED ABROAD

2,516,105 Jan 2021 - Apr 2022
5,676,122 2012 - 2022 (April)

Afghans who have moved abroad from the assessed location, regardless of the reason or duration of the expatriation. This category includes individuals in need of international protection, and economic migrants who have left Afghanistan.

INDIVIDUALS RETURNED FROM ABROAD

1,092,692 Jan 2021 - Apr 2022
5,737,462 2012 - 2022 (April)

Afghans who have returned to the assessed locations after having spent at least six months abroad. This includes both documented and undocumented returnees.

MAIN FINDINGS (As of 30 April 2022)

ARRIVAL IDPs

1,804,363 Jan 2021 - Apr 2022

61% Conflict displacement

39% Disaster displacement

2 in 3 Displaced within their home province

346,468 Arrived in Kabul Province (Highest in Afghanistan)

FINANCE AND ASSETS



55% Of households' have no source of income (excluding debt)



2.9 million Households are in debt

FOOD AND NUTRITION

71% of people in urban settlements cannot afford basic food needs, compared with 68% of rural and 68% of peri-urban settlements

42% of households rely on less preferred or less expensive foods as a coping mechanism

23% of people are unable to access basic food needs

16% of households eat one meal or less per day

10% of households rely on food aid for bread

1% of households resort to extreme measures such as selling organs, selling children, or child marriage to afford food

INDIVIDUALS MOVED ABROAD

2,516,105 Jan 2021 - Apr 2022

1,731,381 69%
Islamic Republic of Iran

446,250 18%
Pakistan

289,112 11%
Europe & Turkey (Other countries: 2%)

INDIVIDUALS RETURNED FROM ABROAD

1,092,692 Jan 2021 - Apr 2022

611,466 56%
Islamic Republic of Iran

342,805 31%
Pakistan

117,746 11%
Europe & Turkey (Other countries: 2%)

⁴ BMA and eCBNA Round 15 Report

The boundaries and names shown and the designations used on this map do not imply official endorsement or acceptance by IOM. Line of Control: Dotted line represents approximately the Line of Control in Jammu and Kashmir agreed upon by India and Pakistan. The final status of Jammu and Kashmir has not yet been agreed upon by the parties

Creation date: 26/December/2022 | Data sources: IOM DTM, DTM BMA/CBNA, IOM CBR, DoRR | Map data: IOM, OCHA, UNHCR | INDEX: RDH10096 | This document was produced with the financial assistance of the Czech Republic, the European Union, the Government of Japan, the Swiss Cooperation Office. The views expressed herein can in no way be taken to reflect the official opinion of the aforementioned donors.

